

Alaska Department of Fish and Game

Habitat Section
Southeast Region



114-33-10230 Tributary 9

ADDITION

Water body name:

Survey date: 9/13/2022

Quad: Juneau A-6

Species & Lifestage:

Upper Reach Latitude: 58.103887 **Longitude:** -135.862097

Survey crew: FC, DK

Lower Reach Latitude: 58.102587 **Longitude:** -135.859315

Findings: We surveyed this uncataloged stream using baited minnow traps and GPS and captured juvenile coho salmon. The tributary stream drains from a muskeg and flows through a 2 ft wide culvert, passing through a small beaver dam downstream (Table 1; Figures 1–3).

Recommendations: Add this uncataloged stream to the anadromous waters catalog for rearing coho salmon (Figure 4).

Nomination: Pending

Table 1.—114-33-10230 tributary 9 survey data.

Waypoint	Latitude	Longitude	Notes	Stream Width ft	Stream Substrate	Habitat Features	Gradient %	Sample Effort	Sample Results
1794	58.103891	-135.862118	24" CMP, fully rusted, partially backwatered and filled 70% with water at outlet. Debris jam from beaver activity at inlet creating small falls into pipe. Stream starts to wane upstream and has diminishing fish habitat. Beaver dams/ponding ~75' downstream. Minnow trap soaked just downstream of culvert ~1 hr.	2-4	Fine Organic Small Gravel		1-2	MT	29 CO



Figure 1.—Juvenile coho salmon captured at waypoint 1794.



Figure 2.—Culvert outlet at waypoint 1794.



Figure 3.—Beaver dam about 75' downstream of waypoint 1794.

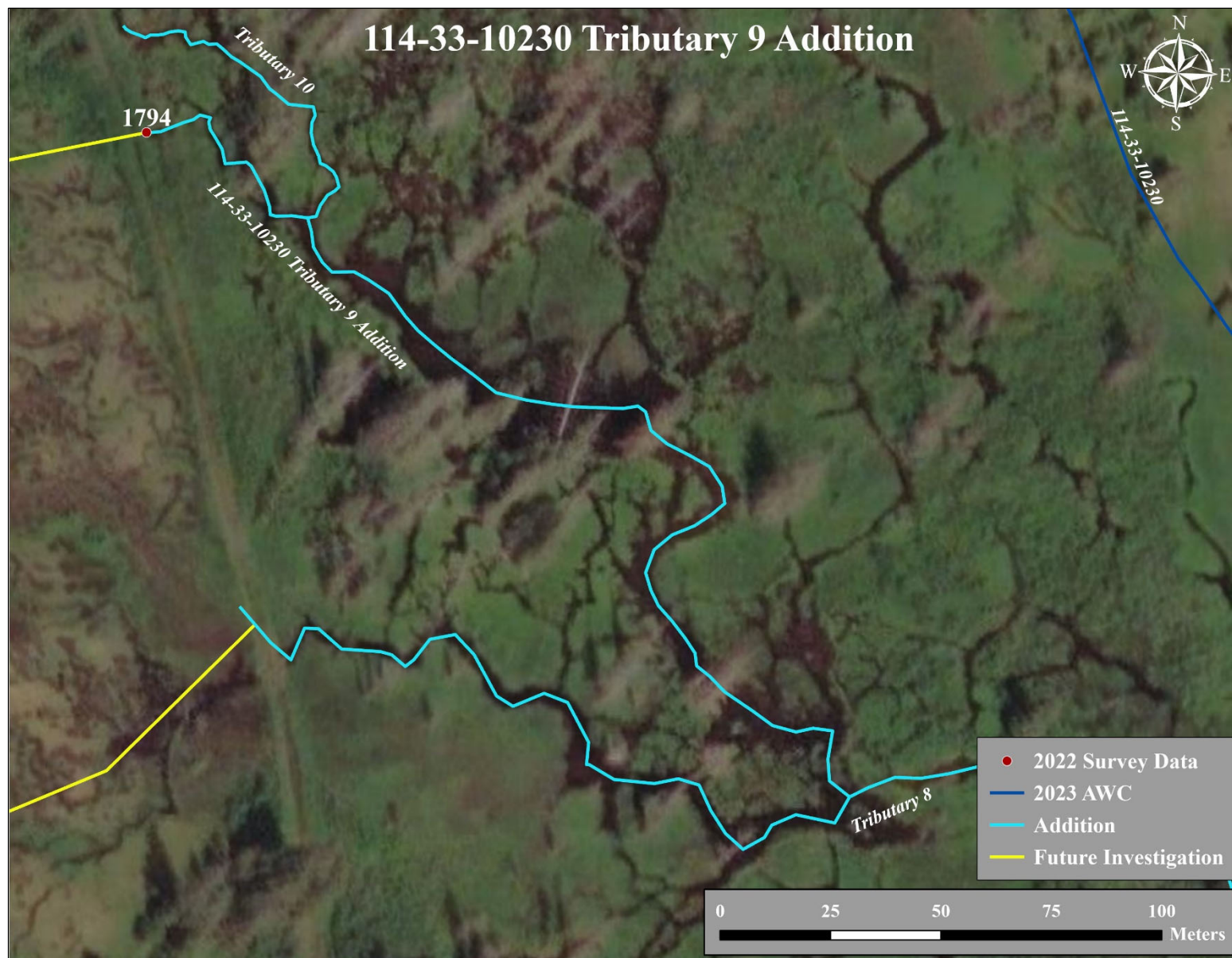


Figure 4.–114-33-10230 tributary 9 addition map.